

Raychem Under Floor Heating - Product Selection



Self-Regulating Technology - How does it work?

Self-regulating systems, also known as “Intelligent” heating systems, have the ability to adjust their power (and temperature) output dependent on the ambient temperature. Therefore in colder ambient conditions, more heat is produced and vice versa. The technology also allows temperature variances within a single zone of underfloor heating.

Example: A self-regulating floor heating system is installed. The floor finish is wood. In an area of the room, a thick rug is placed over the floor. The self regulating system will reduce its power under the rug, but maintain the required temperature in the surrounding floor. This removes the risk of overheating the floor and damaging sensitive natural floor finishes.

Selecting Underfloor Heating System

Select the right underfloor heating system using the table below:

Overfloor	Area	T2 Product	Extra Features
Tiles	Dry Areas (Kitchen, entrance, living room, bedroom)	T2Reflecta	Adjusts heat output Energy saving Even heating distribution
		T2Red	Adjusts heat output
		T2QuickNet-90	For renovation (thin extra layer)
		T2QuickNet-Plus-160	For renovation (thin extra layer) For fast heat-up or poorly insulated under floors
		T2Blue-10W	Pre-terminated, flexible & robust heating cable for flexible design
		T2Blue-20W	Pre-terminated, flexible & robust heating cable for fast heatup requirements
		CeraPro	Ultra thin (3mm) & robust heating cable for undertile applications For installation directly into tile adhesive (thin profile installation) Excellent for renovation projects
	Wet Areas (Bathroom)	T2QuickNet-90	For renovation (thin extra layer)
		T2QuickNet-Plus-160	For renovation (thin extra layer) For fast heat-up or poorly insulated under floors or for higher temperature
		T2Red	Adjusts heat output
		T2Blue-10W	Pre-terminated, flexible & robust heating cable for flexible design
		T2Blue-20W	Pre-terminated, flexible & robust heating cable for fast heatup requirements
		CeraPro	Ultra thin (3mm) & robust heating cable for undertile applications For installation directly into tile adhesive (thin profile installation) Excellent for renovation projects
		Wood / Laminate / Plastic / Carpet*	Dry Areas
T2Red	Adjusts heat output		

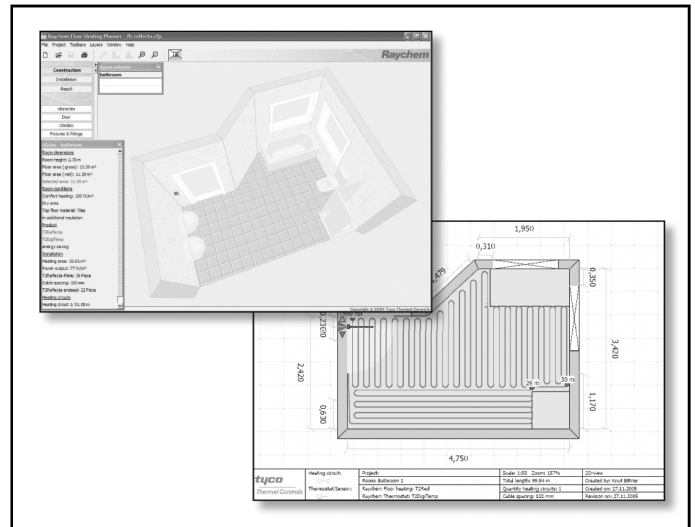
Power Output Requirements:

Selecting the power output of a system requires several considerations:

- Heat losses for the area to be heated
- Floor finish i.e. wood, tile, laminate, etc
- Is this system the sole source of heating or complementary to an existing system?

Call FREE on 0800 969 013 to ascertain the optimum output for your application.

For a FREE complete technical and design brochure, call 0800 969 013 *(Please mention that you have seen the Mechanical Engineers Notebook)*



Product Data Sheets

Full product specification and data sheets are available at:

http://www.tycothermal.com/uk/english/floor_heating/documentation/default.aspx