

## 38 - Distribution / Lighting Connection

### Hager

Hager is a leading supplier of electrical installation systems, solutions and services for residential, commercial properties and industrial applications. Across the world, Hager Group has 20 production sites in 11 countries. The marketing presence in 55 countries is supported by more than 20,000 selling points through our wholesale partners.

#### Commercial Distribution

Electrical distribution for commercial projects has changed with the introduction of the 17th Edition (requiring more RCD protection), and the Building Regulations (driving demand for metering and controls for reducing energy consumption).

**The Invicta 3 TP&N Distribution Boards** range from 125A to 250A having the option for built in metering, as well as dual meter packs for separate metering of lighting and heating loads.

*Main features include:*

- Integral cable protection via an ob-round shaped top and bottom cable entry system that allows quick and cost effective fitting to trunking
- Sophisticated aesthetics with a choice of glazed or solid doors, ideal for commercial offices, retail, health care and education projects
- Clear outgoing L1, L2 and L3 labeling visible with and without the front cover fitted
- 100A top tap off allows flexible outgoing connections
- Clear shrouded neutral bar designed for a safe and easy installation

**The Invicta 3 Panelboards** range from 250A to 800A and also have the option for built in metering.

*Main features include:*

- A removable pan assembly, to lighten the load for easier installation
- The aesthetics match perfectly with the TP&N boards
- Removable top and bottom gland plates, for easier cabling
- Generous space to allow for cable bending radii within the board
- Twin earth and neutral bars to aid identification with line conductors

Our engineered solutions team can also design and build distribution boards to meet specific customer specifications and applications.



#### Lighting Connection Systems

**Klik Lighting Connection System;** is a unique modular plug and socket interface that provides simultaneous electrical and mechanical connection in one action. All connectors have been short circuit tested to 1500A conditional rating. Luminaires can be connected and disconnected safely without circuit isolation ensuring minimised disturbance during maintenance periods.

*Main features include:*

- Klik marshalling boxes are market leaders in mounting options
- Terminal cover slides off from the front with single operation
- Dual switching capability allows one or two circuits from one box
- Can be used with occupancy sensors for enhanced control

**Klik.system for Digital Control;** provides a simple and effective connection for the control of digitally dimmable lighting

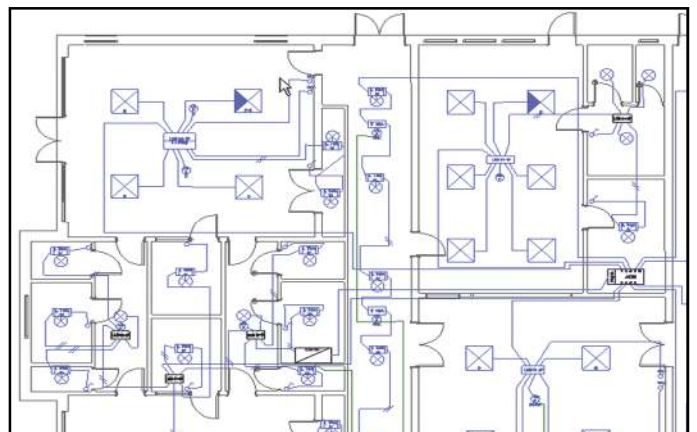
*Main features include:*

- 7 pole marshalling boxes and conduit box/surface connectors
- LS0H leads for digital, standard and emergency luminaires
- Digital occupancy sensors which will automatically configure for DALI or DSI protocols

**Klik.system;** is a prefabricated wiring system providing a bespoke design for projects.

*Main features include:*

- Our Engineers work to develop solutions with customers
- Comprehensive quotations including detailed drawings of product positions and cable runs
- Bespoke klik.system software is used to create a quotation from a customers .dwg file. Software provides;
  - ✓ Installation drawings
  - ✓ Completes all cable calculations
  - ✓ List of parts
  - ✓ Ability to schedule deliveries to suit build program
- Full technical support & commissioning can also be provided by Hager



Hager  
Hortonwood 50  
Telford  
Shropshire TF1 7FT  
Email : [info@hager.co.uk](mailto:info@hager.co.uk)

National Sales Hotline : 0870 240 2400  
National Sales Faxline : 0870 240 0400  
National Technical Support  
Helpline : 0870 607 6677  
Website : [www.hager.co.uk](http://www.hager.co.uk)

hager