

Heating / Cooling Products

Dunham-Bush

We at Dunham-Bush are well known for the technical quality of our heating, cooling and air conditioning products. At our Havant offices and manufacturing facility, technical staff liaise continuously with a network of sales associates to discuss every project, large or small. Although we are qualified to meet the increasingly specialised requirements of customers who seek custom, innovative, high performance solutions, we understand that our vast range often means that there is a Dunham-Bush standard product to suit the application in question. However, our customers may not fully appreciate the extent of our product range, from small fan convector heaters to roof top air handling units and water chillers.

Heating Products – Fan Convectors

Available in a wide range of models and sizes, in cased or chassis guise and suitable for horizontal or vertical applications, fan convectors are ideally suited to schools and public buildings, in which fast responding, effective and reliable heating is required.

Series 600 - Range of cased fan convector heater with a width of 600mm and available in lengths of 600mm, 1200mm and 1800mm for installation in a standard 'T Bar' ceiling grid.

Series AM - Cased fan convector heater range.

Series AM Supercomfort - Range of selected Series AM units, with pre configured control options and available in four sizes from stock for overnight delivery.

Series BM - Chassis fan convector heater range.

Series CM - Range of value engineered 600mm high cased fan convector heaters specifically designed for installation below window sills.

Avant-Garde - Series AM and Series BM units configured for use with LPHW at condensing boiler temperatures and fitted with a 4 port valve to prevent wasteful natural convection during mild conditions. Brushless DC motor option available.

Low Surface Temperature (LST) - Series AM and Series BM units configured to ensure that leaving air and surface temperatures are safe, in accordance with NHS Estates 1998 guidelines.

Series UH - Range of cased unit heaters, for use with either hot water or steam and available in four sizes with a comprehensive range of inlet and discharge accessories.

Sentry - Range of door curtains available in cased or chassis guise and suitable for vertical or horizontal applications.

Radiant Heating

Evolution - Architectural radiant heating panels, available for modular installation in ceiling surface mounted, ceiling grid, freely suspended or wall surface mounted applications.

Evolution Heavy Duty - NOMS approved cornice style heavy duty radiant panel for prison cell applications.

Dunham-Strip - Industrial radiant heating panels for hot water or steam applications.

Natural Convection

Finvector - Modular cased perimeter heating system available in various casing styles, depths and heights.

Freshvector - Evolution of the Finvector range incorporating powered louvres such that both heating and fresh air requirements are satisfied with a single product.

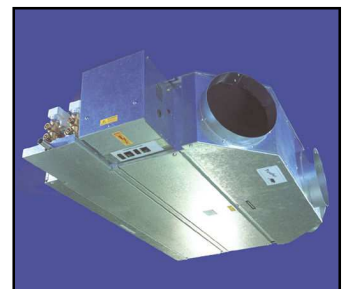
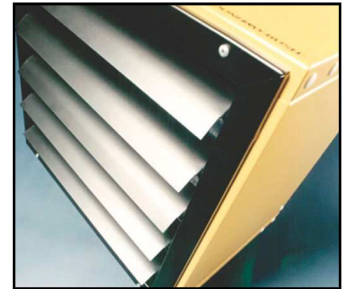
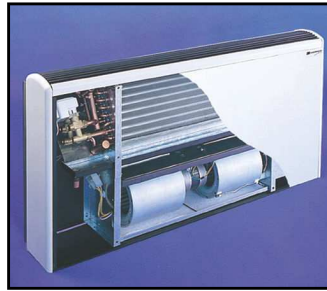
Hydrocourse - Modular trench heating system, available in a multitude of sizes and with a large range of grille options.

Aerocourse - Fan assisted trench heating system, available with a large range of grille options.

WarmSafe II LST - Range of low surface temperature natural convector heaters and radiator covers.

Air Handling Units (AHU)

Air handling units (AHU) that incorporate a comprehensive range of standard features so that even the most demanding specification may be satisfied, including those for hospital projects, where HTM 03-01 must be considered.



Fan Coil Units

Panther - High specification 280mm deep waterside controlled horizontal chassis fan coil unit range.

Leopard - High specification 230mm deep waterside controlled horizontal chassis fan coil unit range.

Cougar - High specification 180mm deep waterside controlled horizontal chassis fan coil unit range.

Puma - High specification 235mm deep waterside controlled vertical chassis fan coil unit range.

Ocelot - High specification 250mm deep waterside controlled vertical cased fan coil unit range.

Jaguar - High specification 280mm deep airside controlled horizontal chassis fan coil unit range.

Lynx - Economy specification 280mm deep waterside controlled horizontal chassis fan coil unit range.

Series F - Mid range specification waterside fan coil unit range available in cased or chassis guise and suitable for vertical or horizontal applications.

Concierge - High specification 300mm deep waterside controlled horizontal chassis fan coil unit that incorporates a polyester powder coated access panel with punched return air grille and fitted downlights. Although compact in size, this integrated package provides cooling and heating at a noise level conducive to uninterrupted sleep and unparalleled access for service and maintenance.